



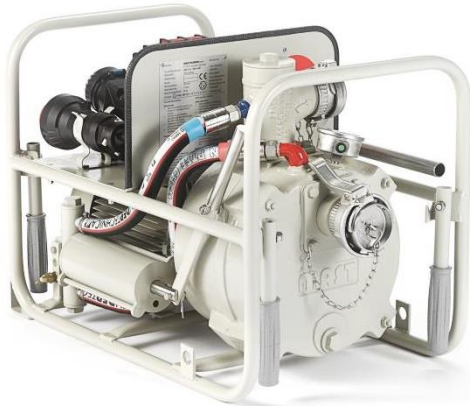
# HAZMAT PUMP GUP 3-1,5 TW / S

Aggressive liquids ▪ Electric motor 400 V

DIN 14 427 approved ▪ certificate PVR 354/4/92

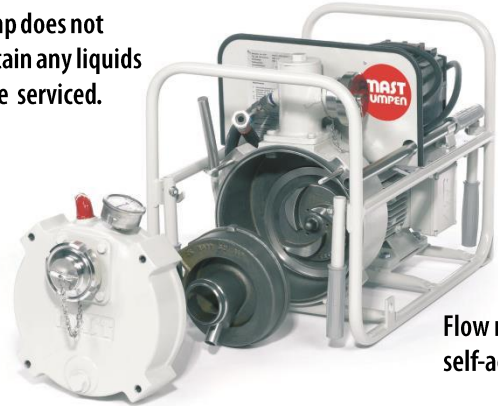


Flow against closed valve possible.



Particularly suitable for with solids contaminated liquids (e.g. small stones, glass, metal pieces).

Pump does not contain any liquids to be serviced.



Flow rate self-adjusting.

Easy handling for cleaning.

Immediately ready-to-use even after longer storage.

Complete unit EX-proof acc. to protection class EEx II 2 G c IIB T3 in compl. with RL 94/4/EG (ATEX) Examination certificate IBExU04ATEXB025X

## APPLICATION AREA:

Within hazardous zones 1 and 2 for aggressive and inflammable liquids within the resistance of the used materials stainless steel N° 1.4408 and N° 1.4571 (V4A) and fluorelastomer FKM (Viton).

Ambient temperature  $T_a$ :  $-20^{\circ}\text{C} \leq T_a \leq +60^{\circ}\text{C}$

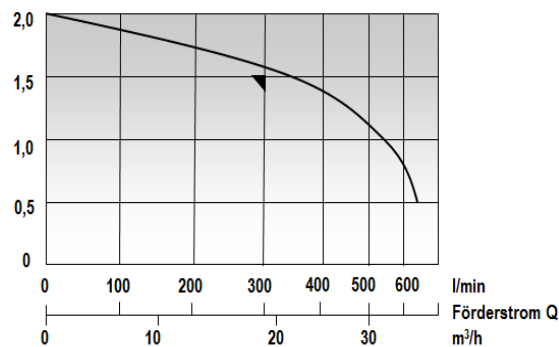
Liquid temperature  $T_{FM}$ :  $-20^{\circ}\text{C} \leq T_{FM} \leq +40^{\circ}\text{C}$

Liquid density:  $\leq 1,1 \text{ kg/dm}^3$

## FLOW RATE:

Q l/min	bar (p)
620	0,5
550	1,0
460	1,25
200	1,75
0	2,0

Förderdruck p bar



Q l/min at H m (Watercolumn), valid for  $\rho = 1 \text{ kg/dm}^3$  and kinematic viscosity  $\eta = 1 \text{ mm}^2/\text{s}$ . Flow rate and efficiency DIN 1944. Accuracy level III.

## CHARACTERISTICS:

Pump type: 3~ 400 V Three-phase AC 50 Hz  
 Power  $P_1 / P_2$ : 3,0 kW / 2,5 kW  
 Rated current: 4,55 A  
 Shaft speed: 2860 U/min.  
 Total weight: 81 kg  
 Dimensions: L 62 x W 39 x H 46 cm  
 Connections: G 2"  
 Discharge Conn.: TW / alternativ e DN 50 DIN 11 851 (/S)  
 Solid passage:  $\varnothing 10 \text{ mm}$   
 Cable: H 07 RN-F 5G1,5 (1,5 m)  
 Plug: EN CEE 16A 5-pole EEx

## MATERIALS:

Pumpe housing: Stainless steel N° 1.4408 (V4A)  
 Tubular frame: Stainless steel N° 1.4571 (V4A)  
 Impeller: Stainless steel N° 1.4408 (V4A)  
 Diffuser: Stainless steel N° 1.4408 (V4A)  
 Screws: Stainless steel A2  
 Gaskets: Fluorelastomer FKM (Viton)  
 Mechanical seal: Face seal carbon / carbid (Al<sub>2</sub>O<sub>3</sub>)



MAST PUMPEN GmbH  
Pump manufacturer  
Mörikestr. 1 • D-73773 Aichwald

+49 711 936704-0  
info@mast-pumpen.de  
www.mast-pumpen.de

Subject to change\_V\_01/17